

EBENE® app (ITAVI): Assess welfare of broilers on farm



ITAVI is a French national institute for applied research in poultry, rabbit and fish. With the help of various stakeholders, ITAVI has developed the EBENE® app, a practical and easy-to-use method of assessing welfare on farms. Multiple indicators are collected in three stages: a questionnaire, a health protocol and a behavioural protocol.



The assessment results are immediately visible through the app. Each criterion is given a score and displayed on a spider map, allowing comparison of the results with those of other farms in the same poultry production sector. Farmers receive detailed scores as well as advice on how to improve their results.

The EBENE® app has two subscription plans:

- Individual free access after creating a user account
- Licensed access, which provides additional features for professional use. This licence is aimed at companies in the poultry farming sector, as well as at organisations supporting farmers and businesses in this sector, such as veterinarians and advisors.

Contact : ebene@itavi.asso.fr

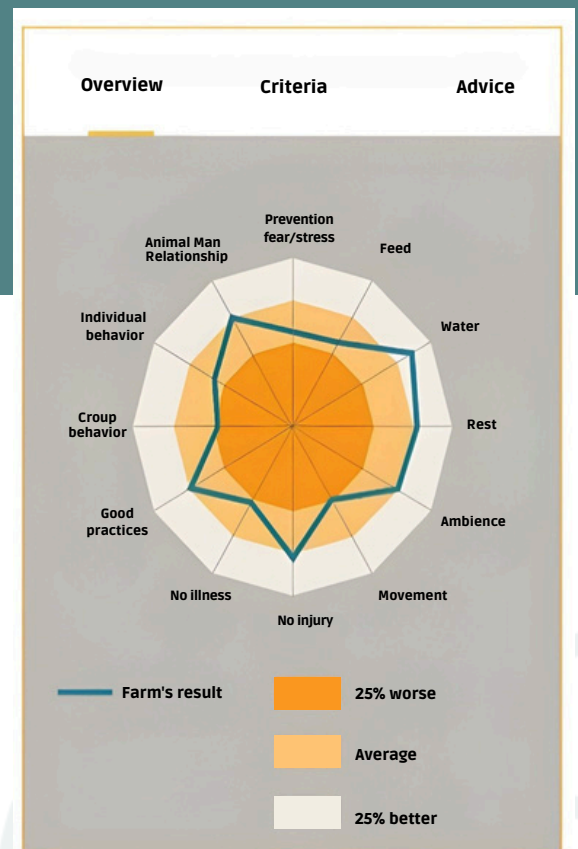


Fig.1 - APP's spider map showing the assessment results. The top 25% of marks are shown at the edge of the map and the lowest marks are shown in the centre.



Discover the
EBENE® app